



69 Ruddlesway, Windsor, SL4 5SG
Offers in the region of £515,000

 **HORLER**

69 Ruddlesway, Windsor, SL4 5SG

Located in a popular cul-de-sac on the sought-after Laing Estate in Windsor, this charming three double bedroom family home offers a perfect blend of modern living and comfort. The property has been beautifully refurbished in key areas, creating an inviting open-plan living space that seamlessly connects to a delightful south-facing rear garden, ideal for enjoying sunny afternoons and entertaining guests.



Property Summary:

Located in a popular cul-de-sac on the sought-after Laing Estate in Windsor, this charming three double bedroom family home offers a perfect blend of modern living and comfort. The property has been beautifully refurbished in key areas, creating an inviting open-plan living space that seamlessly connects to a delightful south-facing rear garden, ideal for enjoying sunny afternoons and entertaining guests.

The integral garage provides ample storage as well as a separate utility room and convenient off-road parking at the front of the house, enhancing the practicality of this desirable family home. Inside, you will find a well-appointed downstairs shower room, alongside a family bathroom and an ensuite shower, ensuring that the needs of a busy household are well catered for.

This property is not only a wonderful place to live but also a fantastic opportunity for families seeking a peaceful yet vibrant community. With its modern amenities and spacious layout, this home is sure to impress. Don't miss the chance to make this lovely residence your own in the heart of Windsor.

Council Tax Band 'E'

Legal Note.

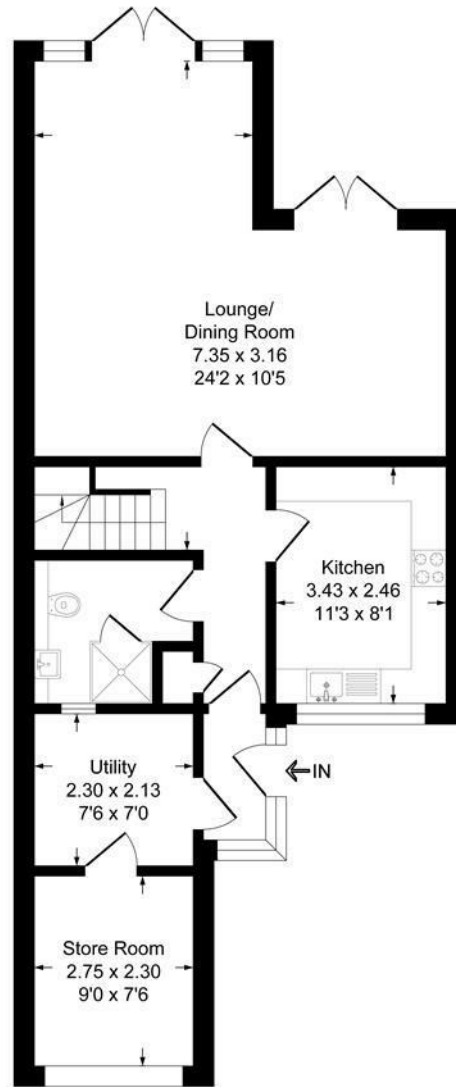
****Although these particulars are thought to be materially correct, their accuracy cannot be guaranteed and they do not form part of any contract.****



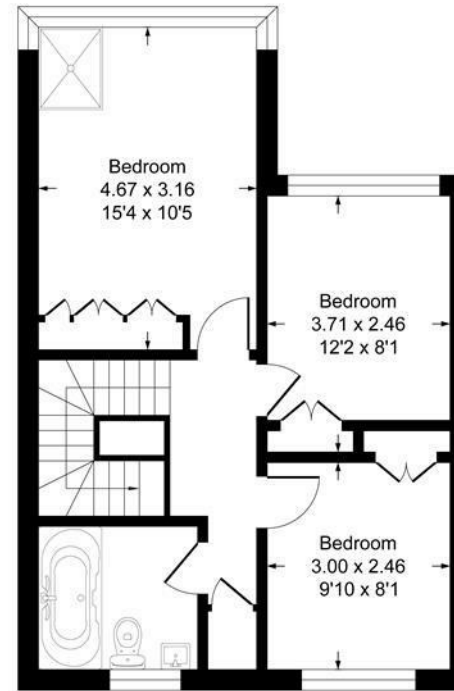


Ruddlesway Windsor SL4

Approximate Gross Internal Floor Area = 111.4 sq m / 1199 sq ft
(Including Garage)



Ground Floor



First Floor

Illustration for identification purposes only, measurements are approximate, not to scale.
Produced By Esjay Property Marketing